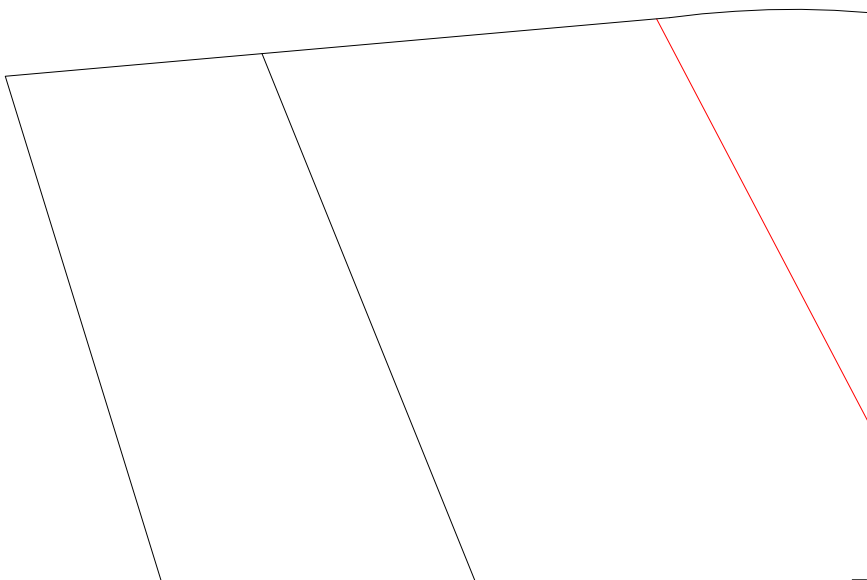
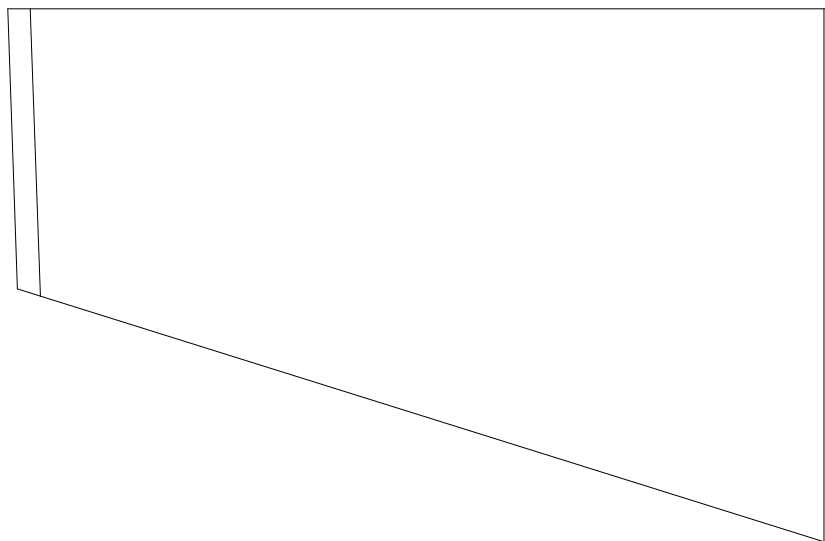
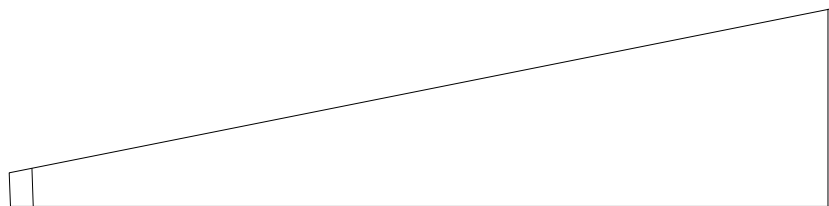
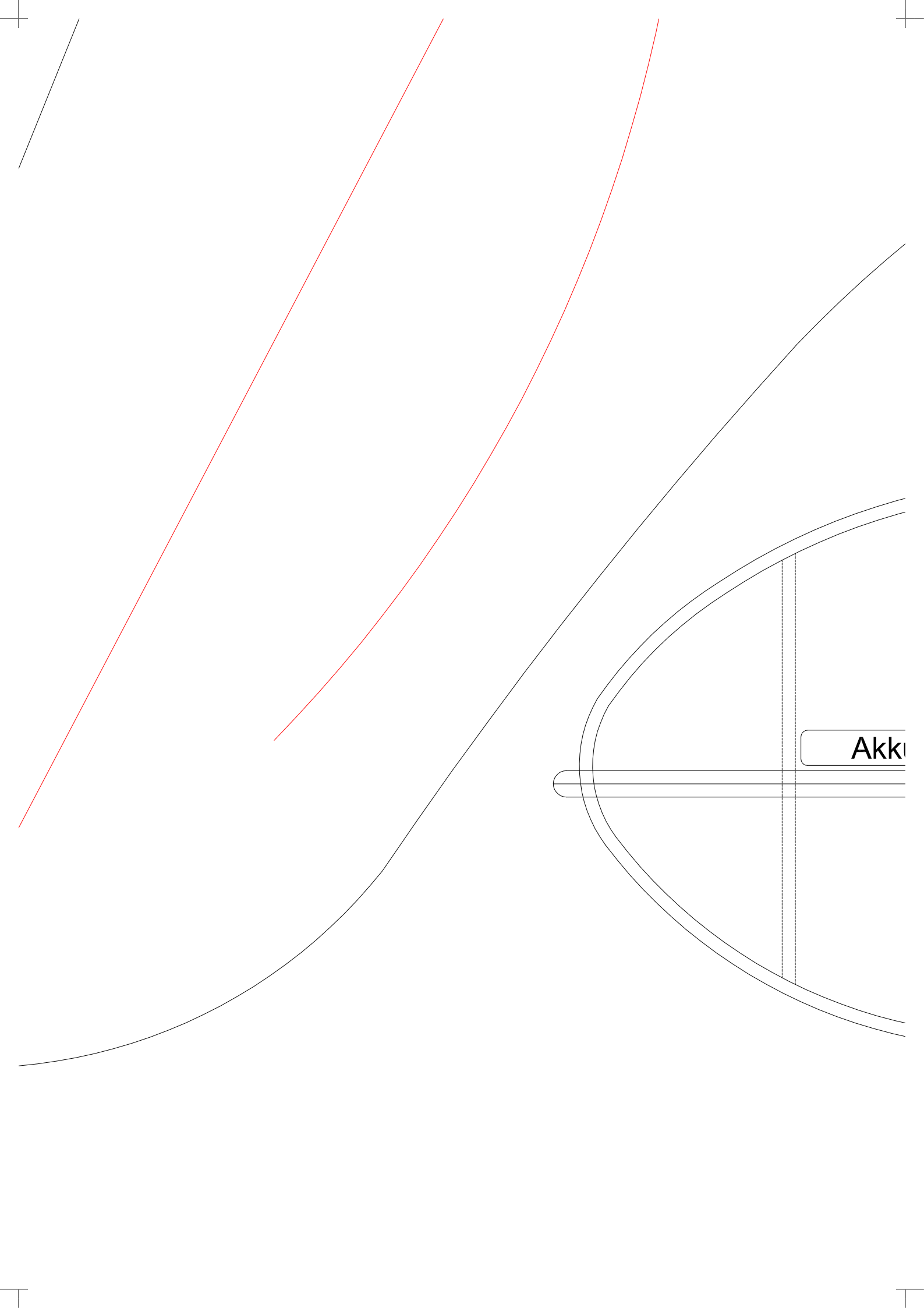


Trennli

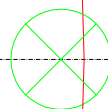


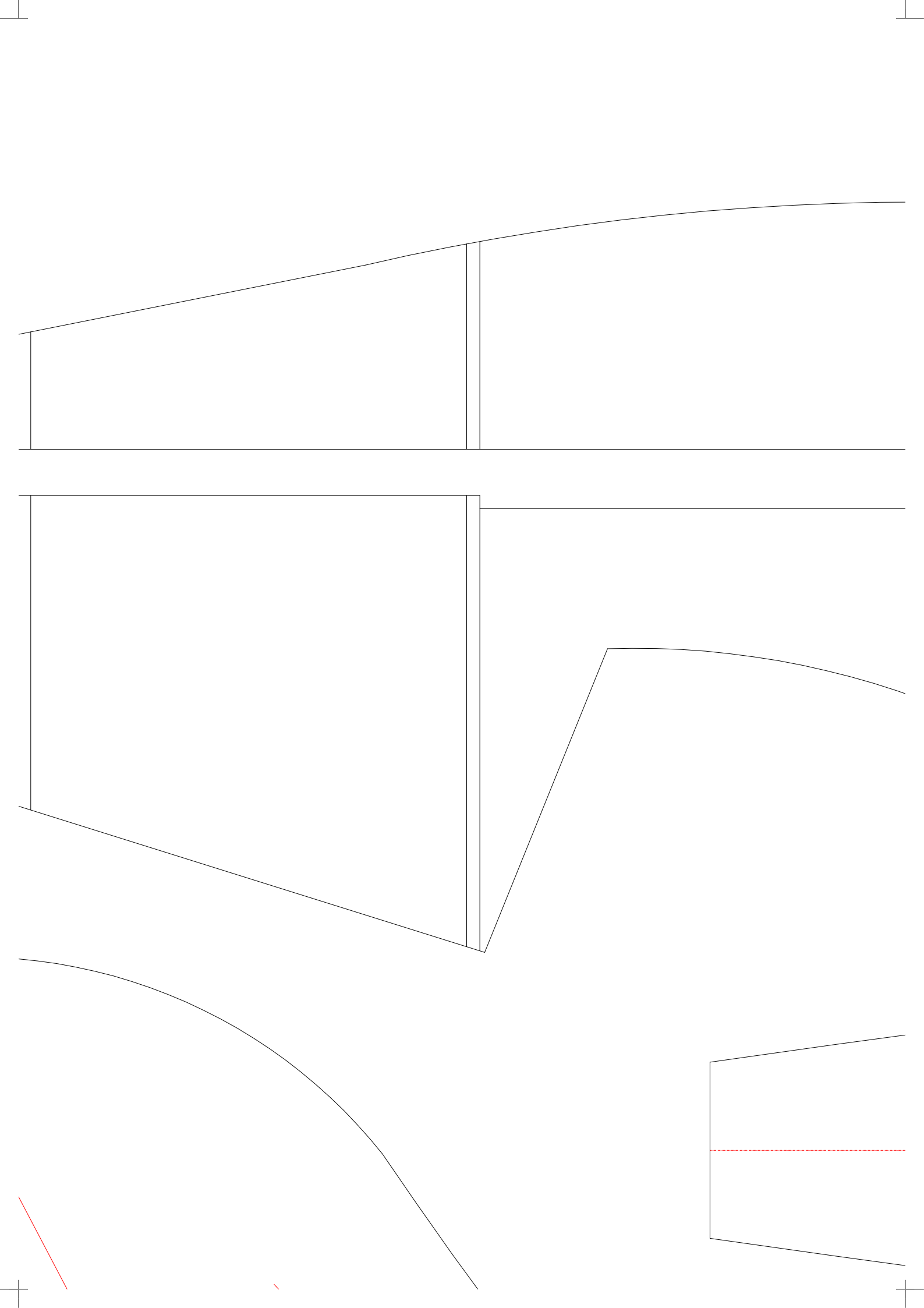


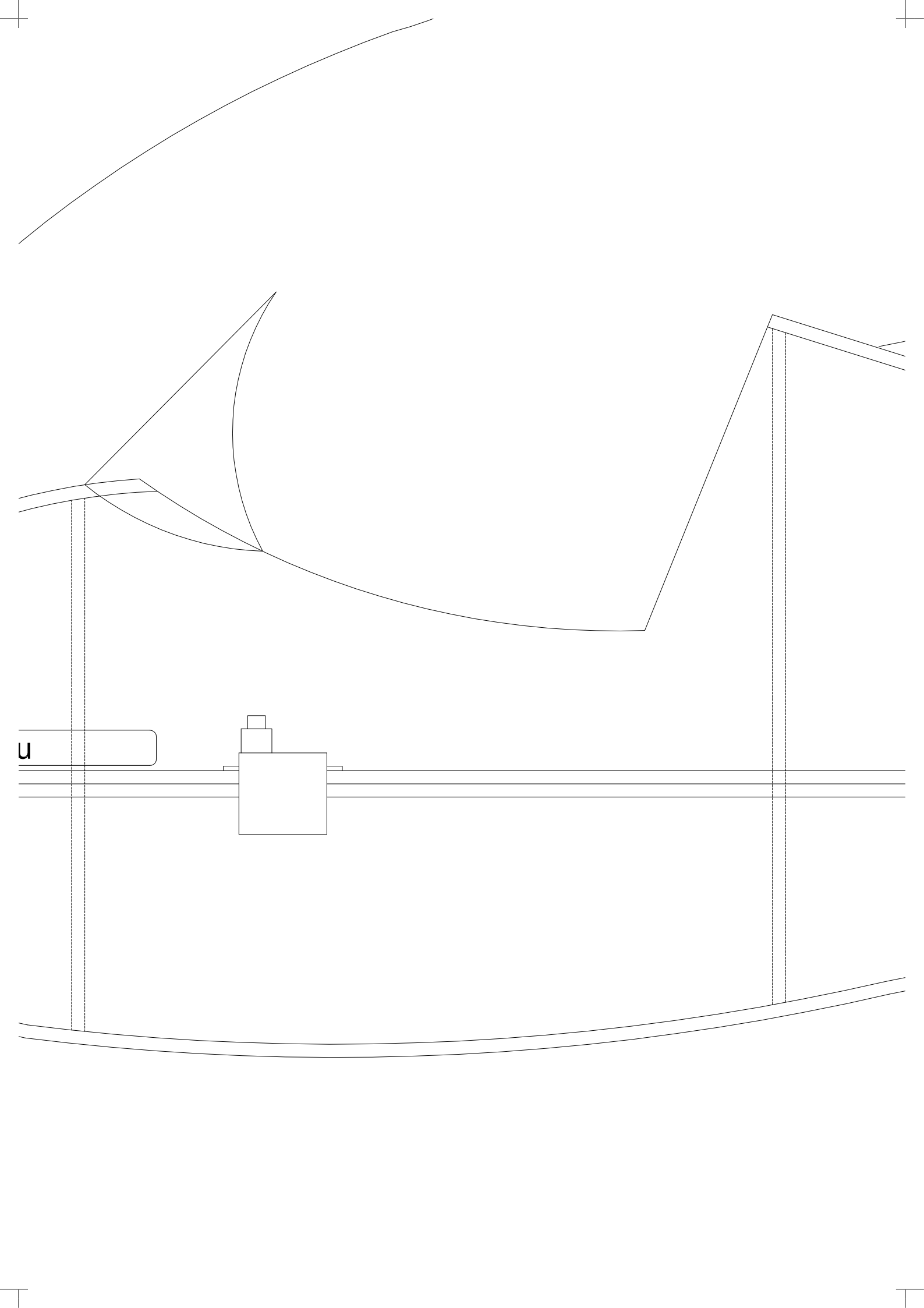
Akk

nie / KF - Stufe

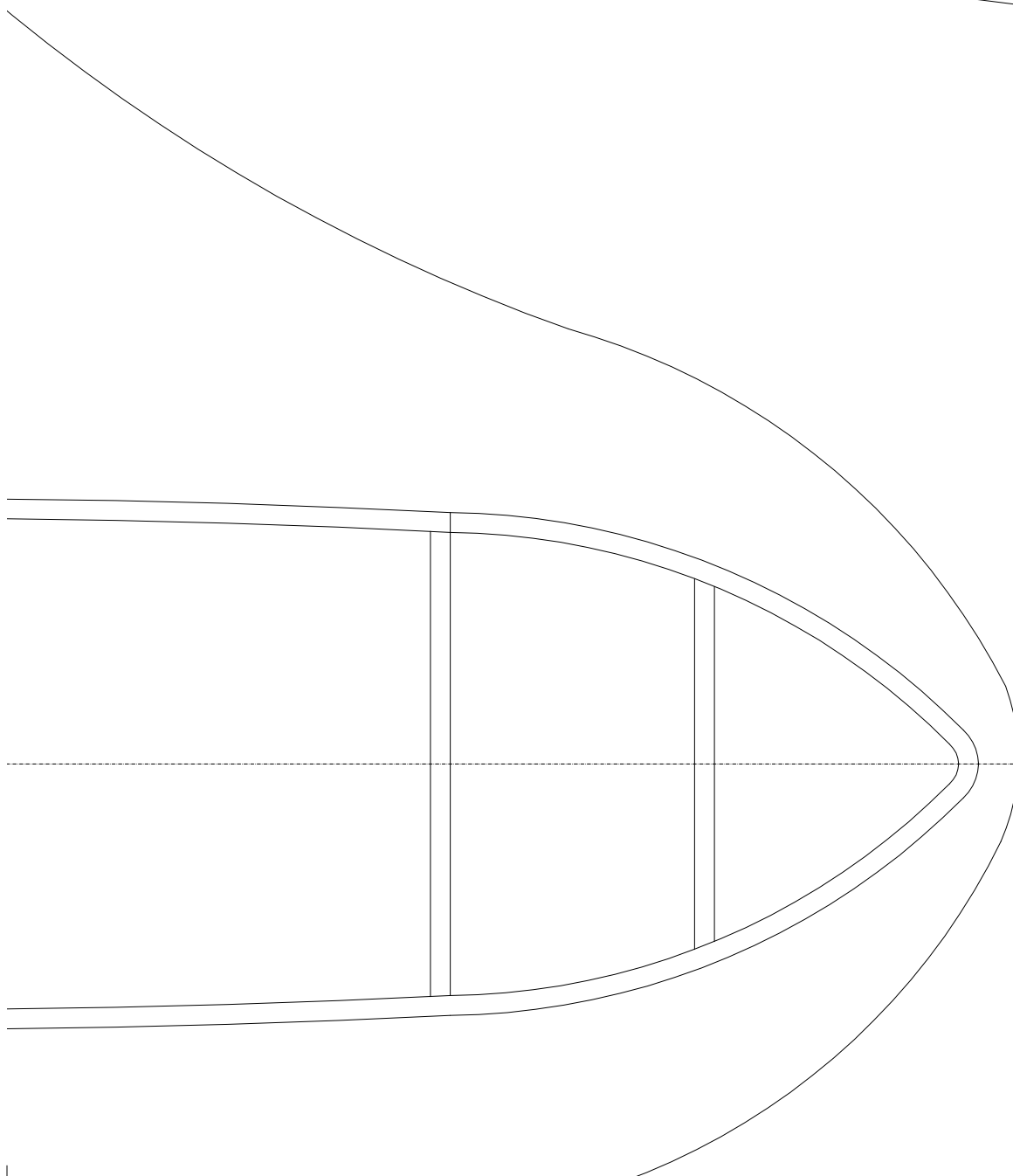
Holm CFK 3x0,8

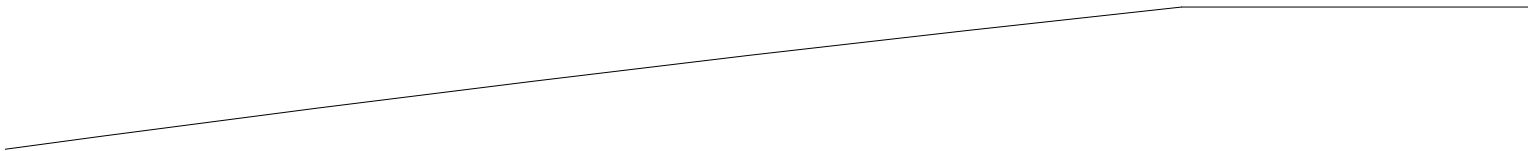
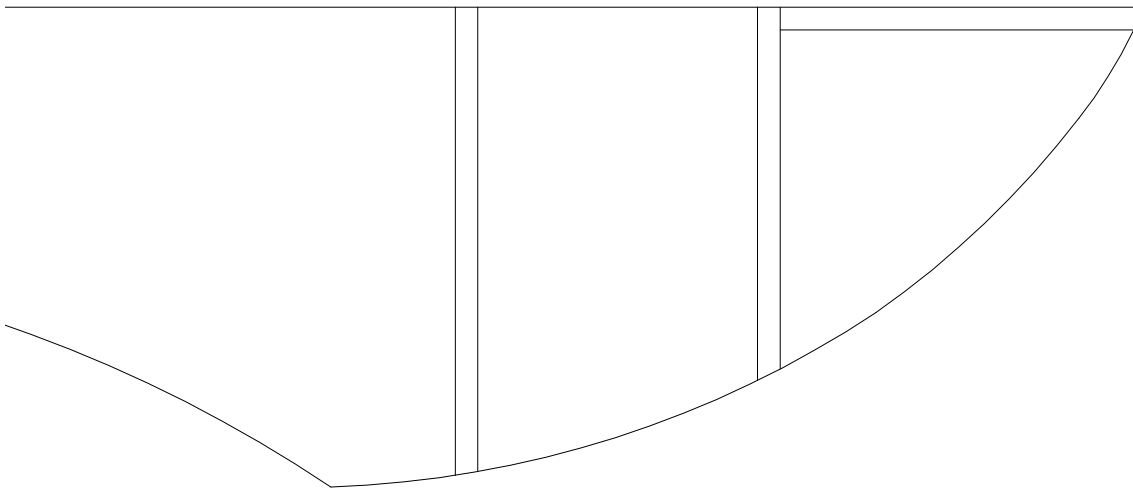
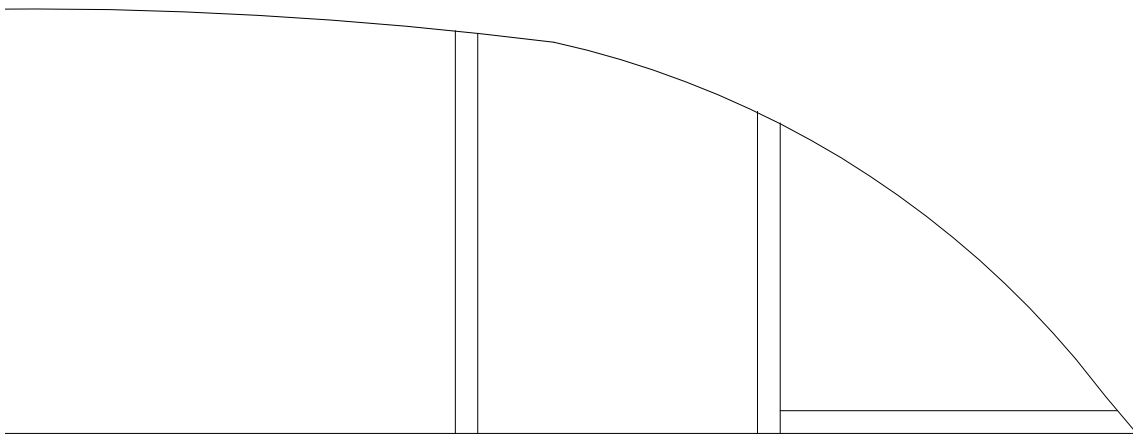






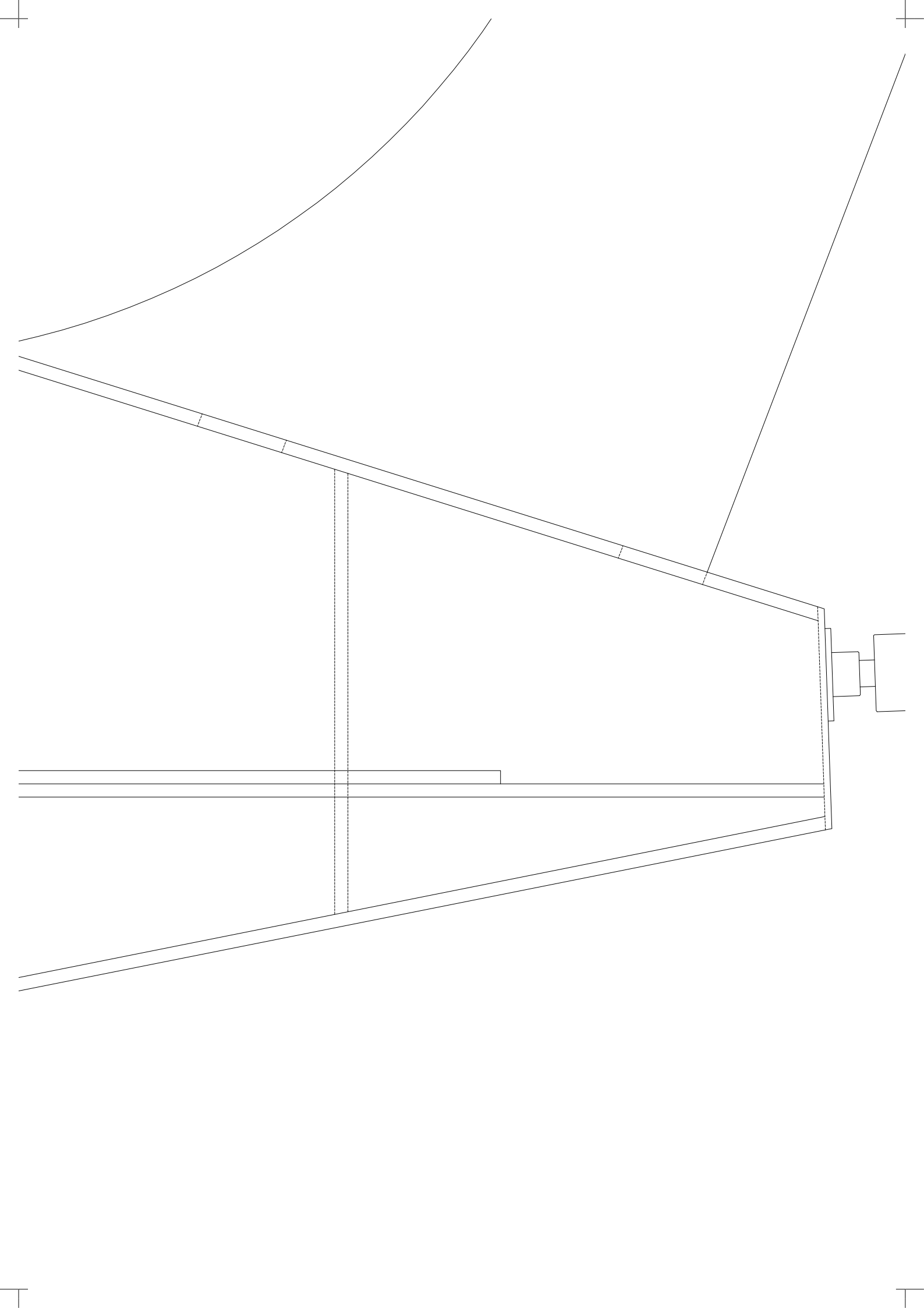
Rumpfrücken mit Übermaß





Rumpfboden mit l





Rumpfnase mit Übermaß

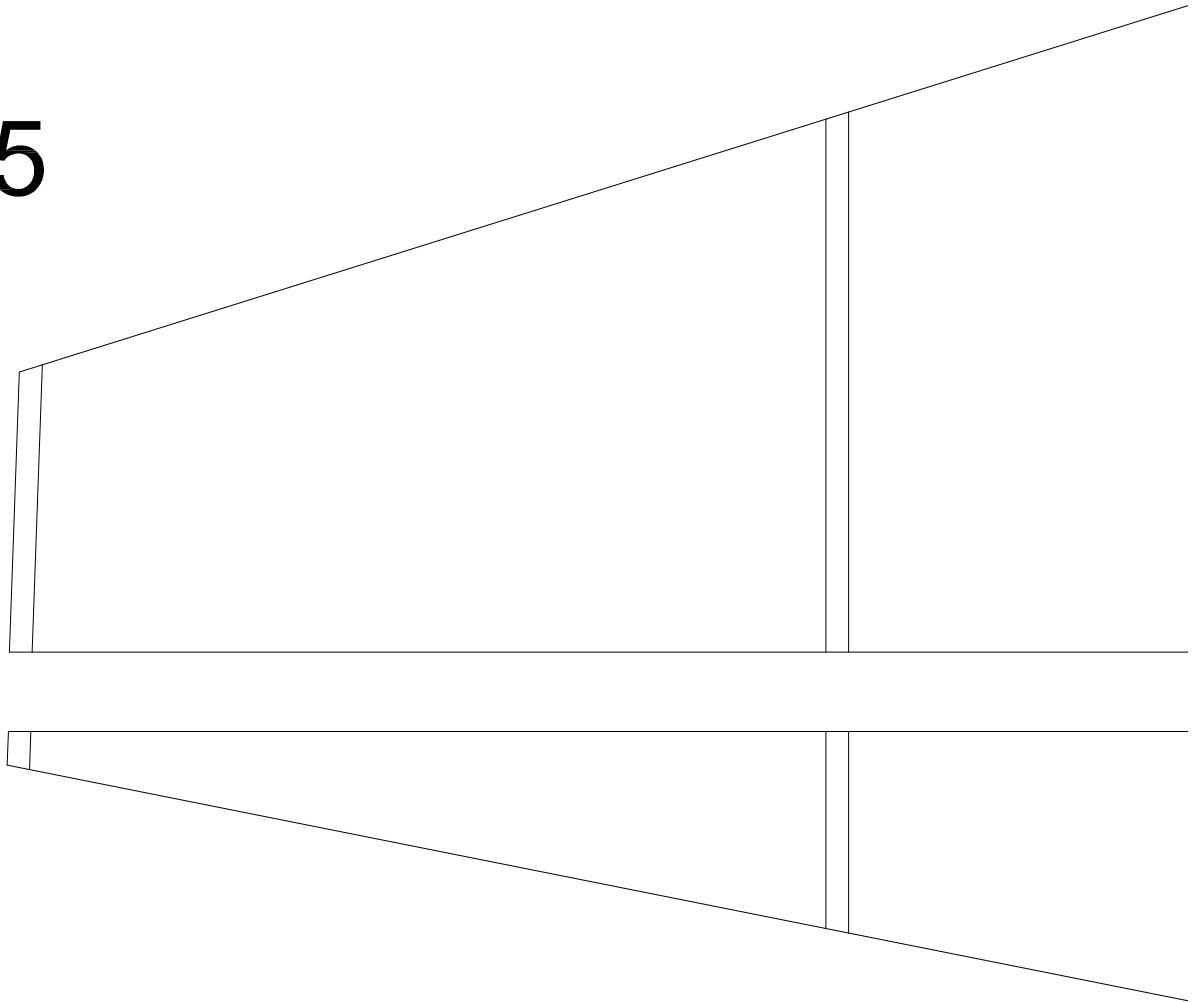
2

4

1

5

4



Übermaß

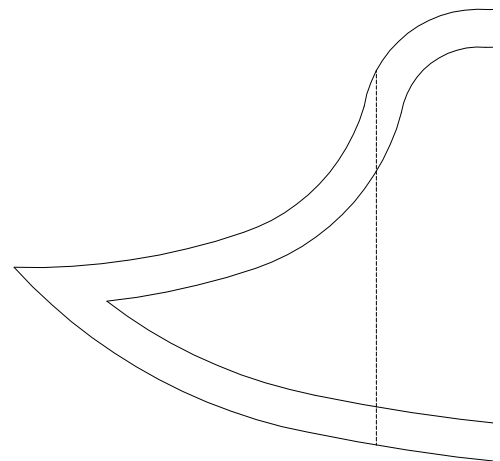
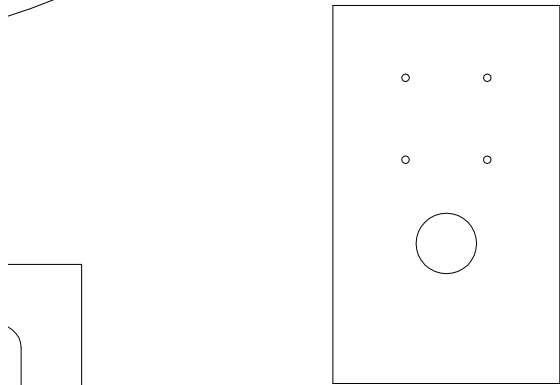
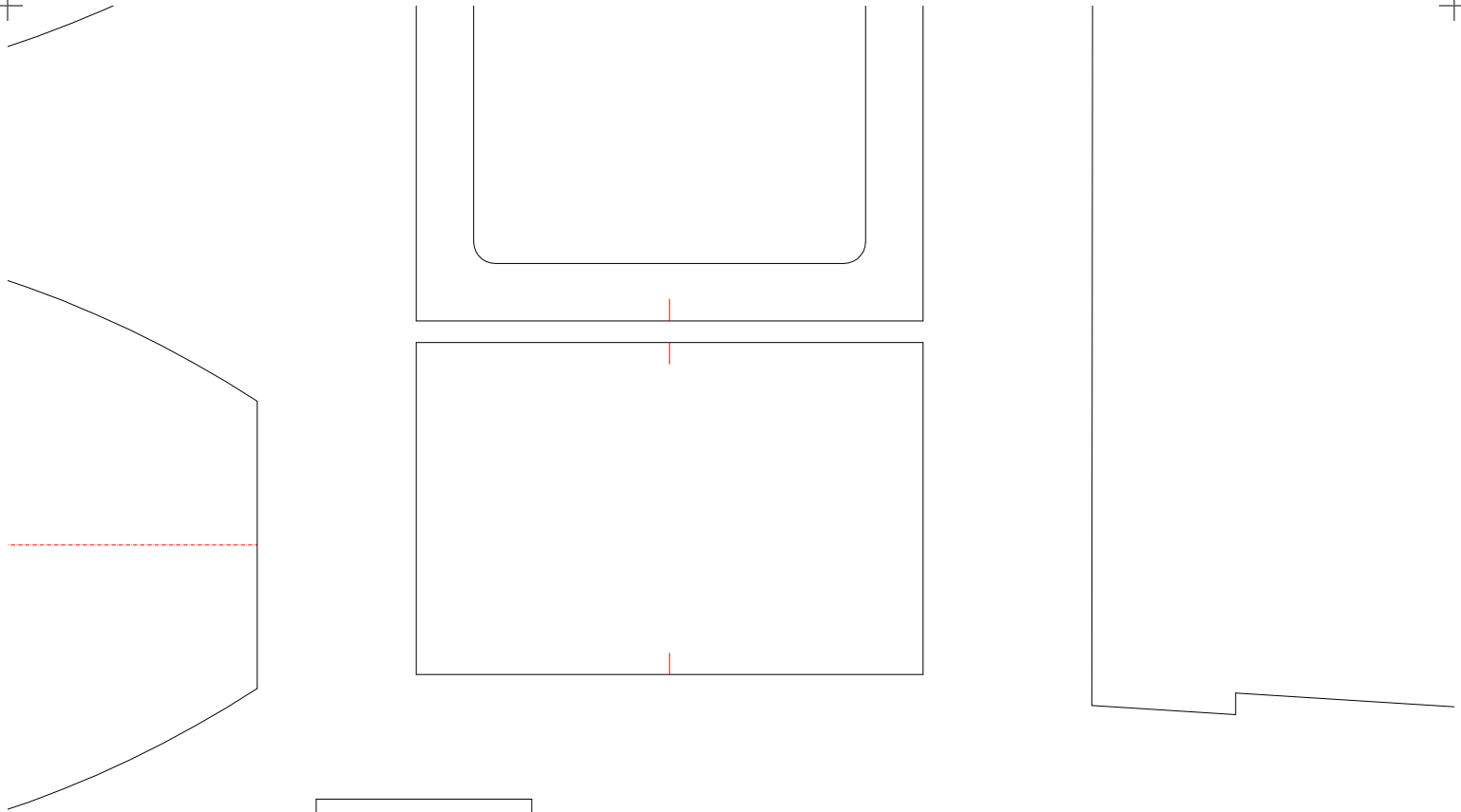
Spannweite 60
Fluggewicht ca
10g BL-Motor n
6 - 10A Regler
2 Servos 4g - 5
Akku 2s 350mA
Luftschraube 5:

"Judi Je

Ein kleiner Delta - D
im Con
und einer Tragfläche

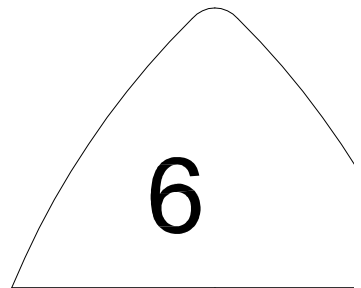
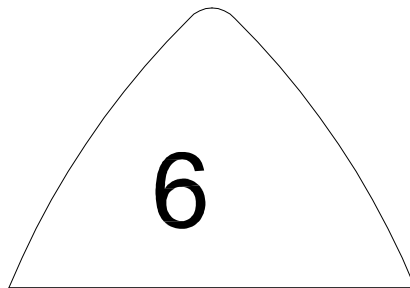
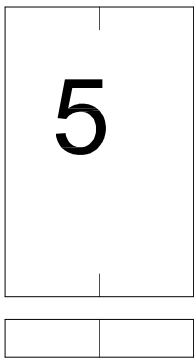
Idee Donald Suluu
Konstruktion und
Jürgen Beste

Verwendung nur für p

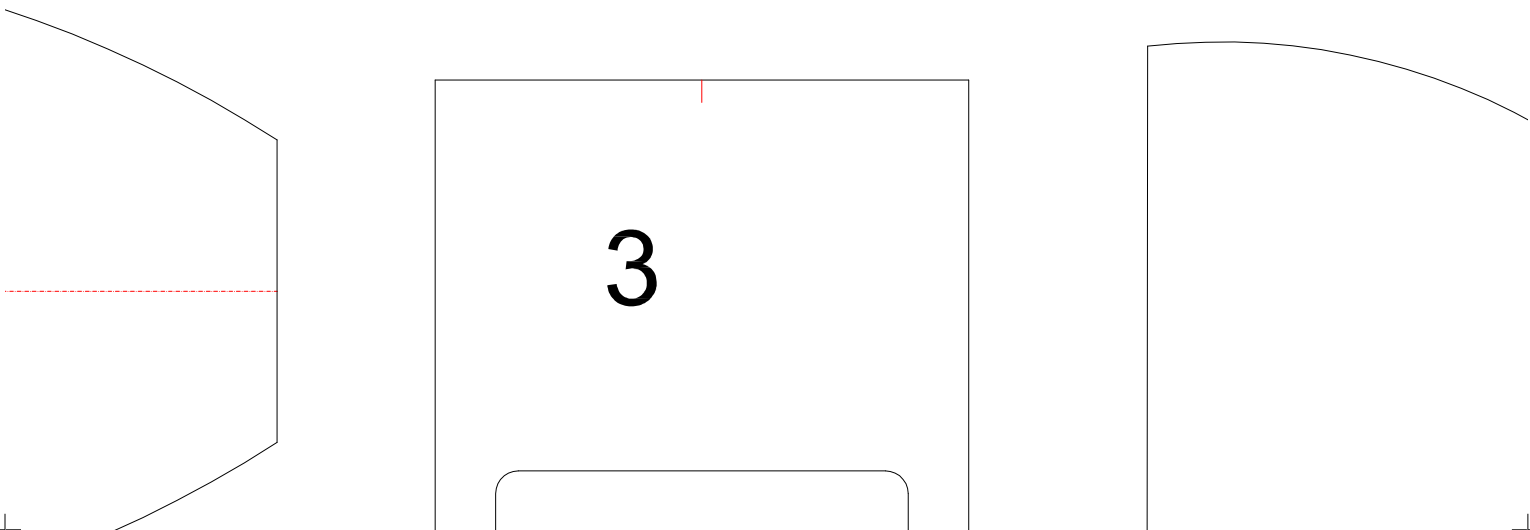
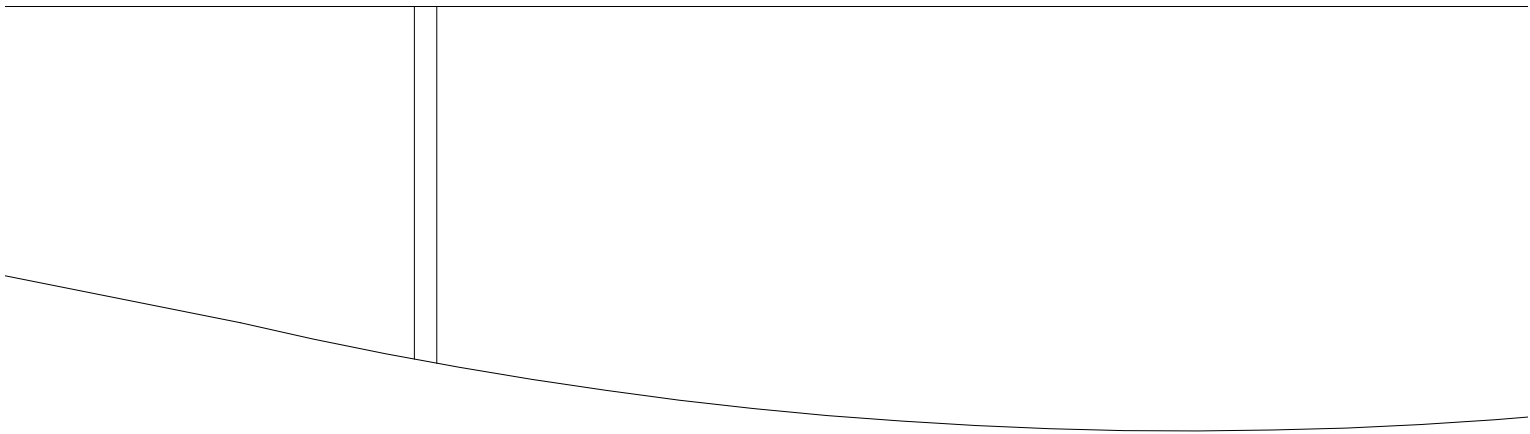
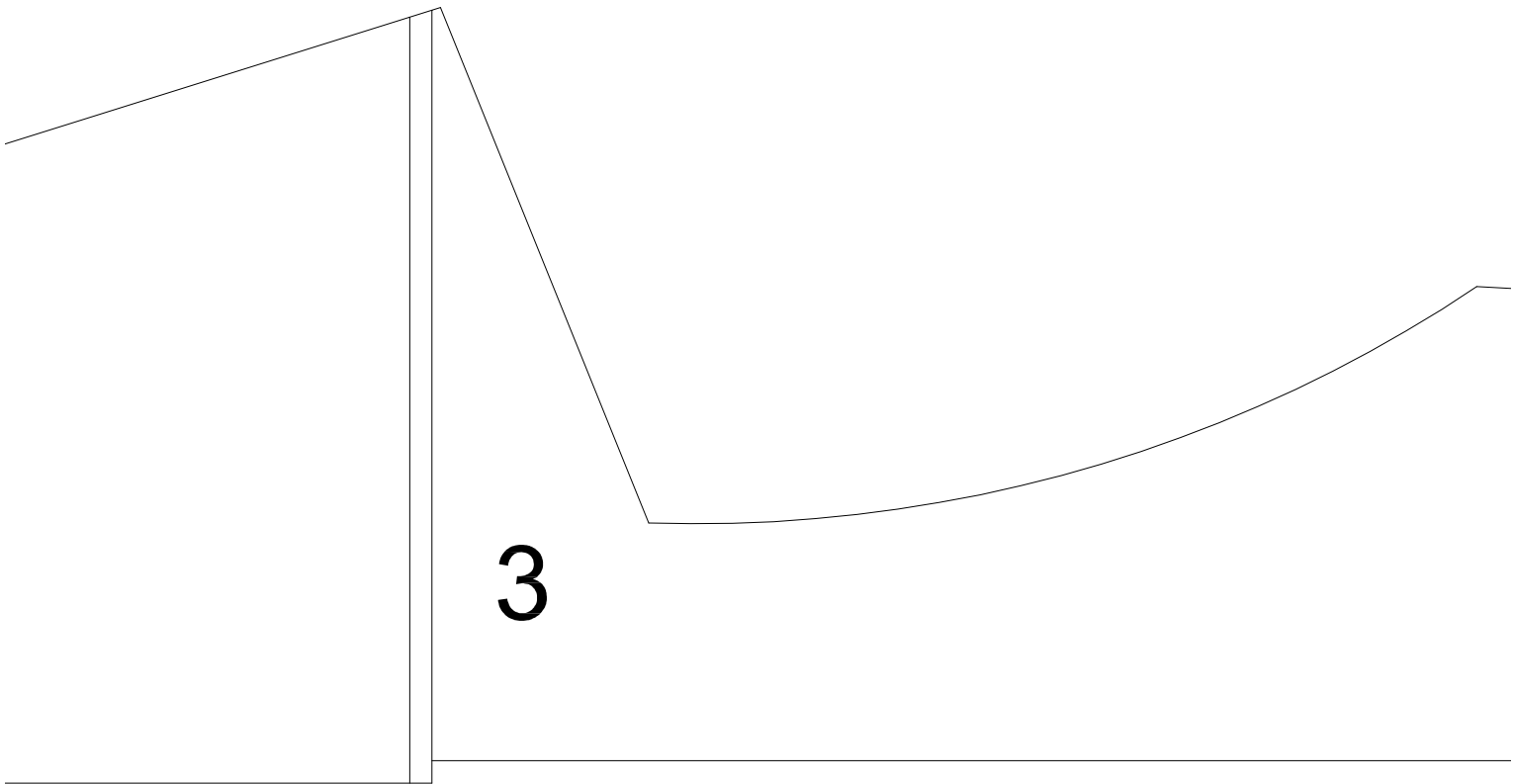


Motorspant Sperrholz 1,5mm

Coc
z.B.
ode



Material 3mm



0mm

. 150 - 160g

nit 2000kv

ig Klasse

Ah - 500mAh

x3 - 6x3 z.B GWS

etstream"

epron - Pusher - Jet

nicstyle

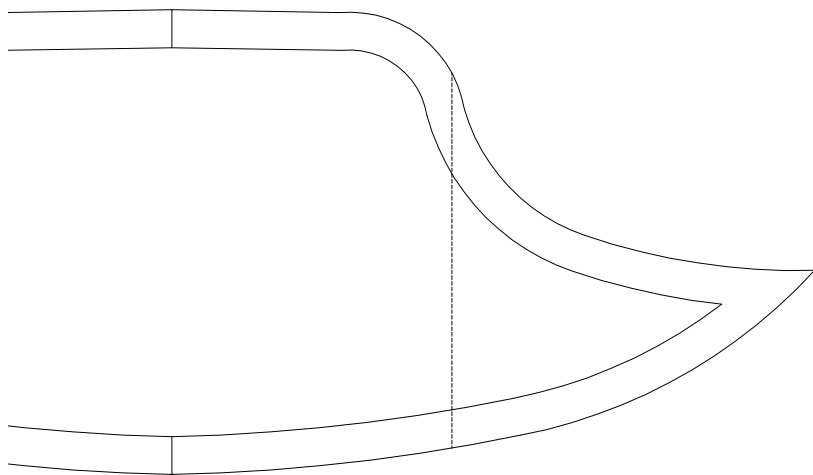
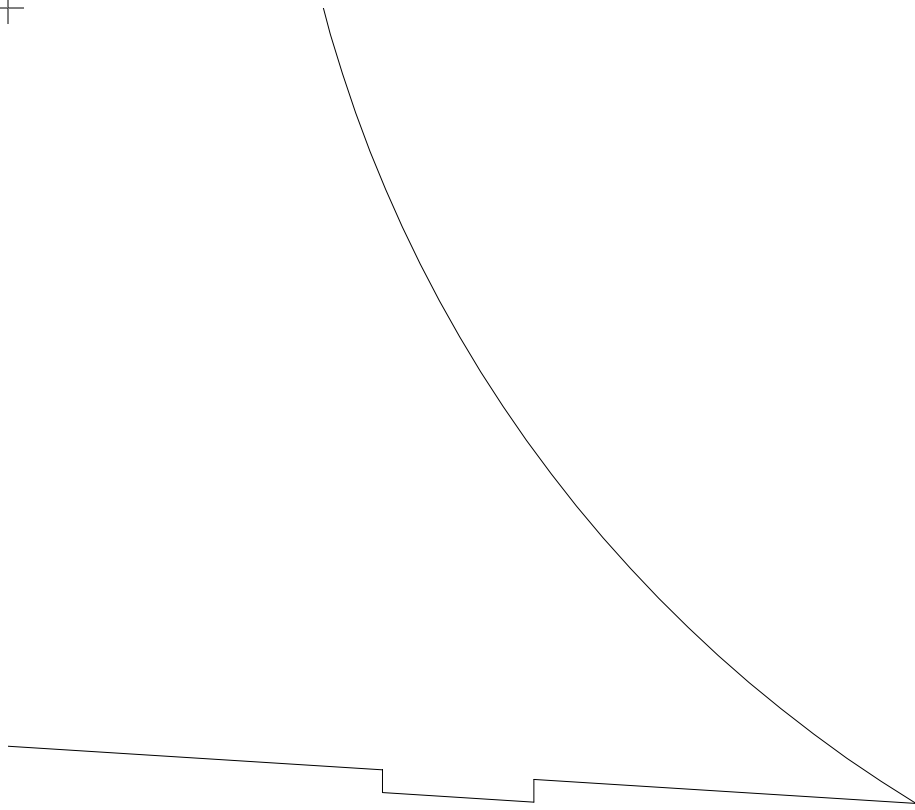
nach Kline -Fogleman

q Ferguson, Jr.

d Zeichnung

enlehner

private Zwecke



kpitscheibe
Blisterverpackung
r dünne Klarsichtfolie



2

1

6

